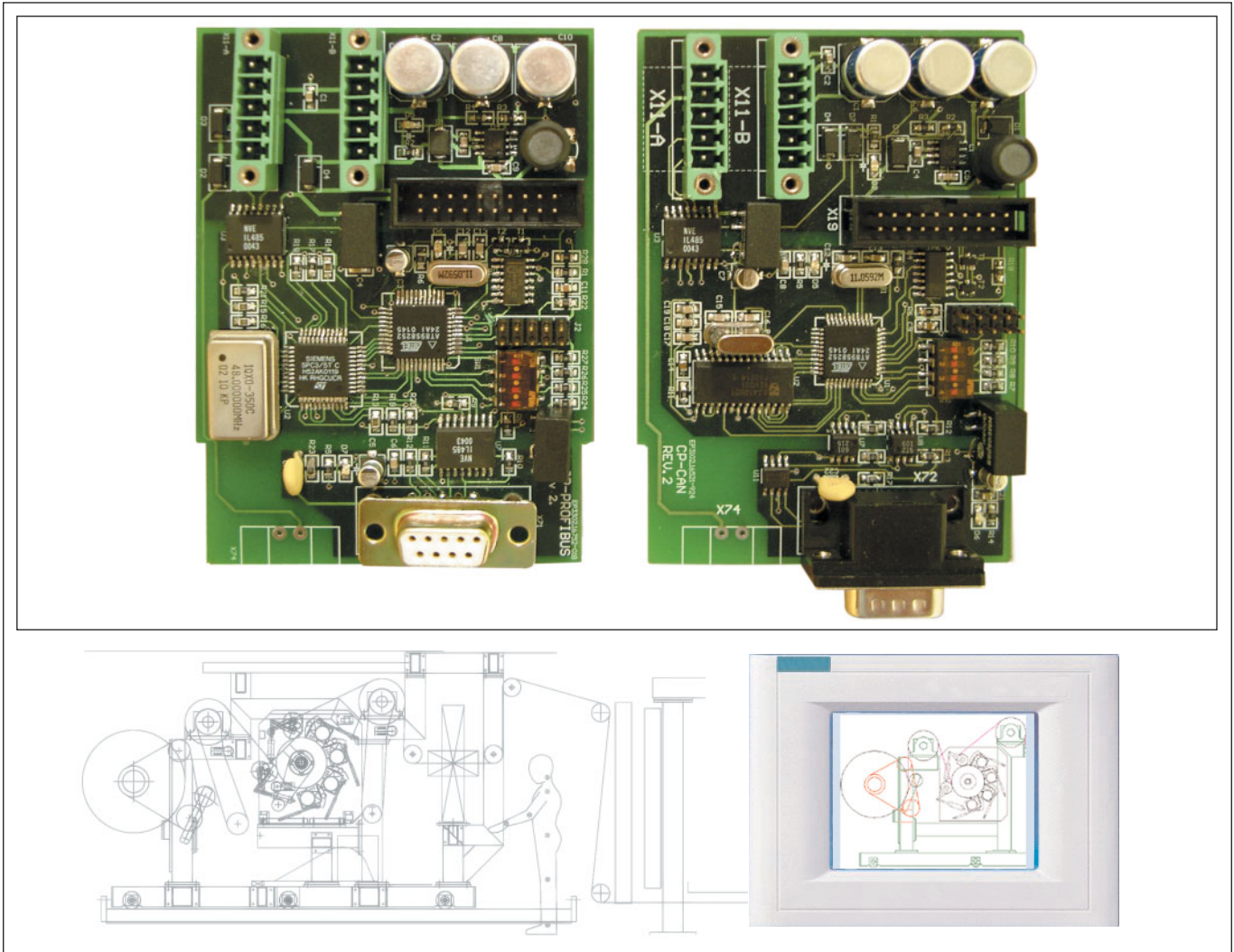


# Corona-Plus

## INTERFACE OPTIONS



### Integration of Corona-Plus into large process lines

The CP Interface options enables efficient control and exchange of data between Vetaphone CP-generators and central control panels, using the same programming as the rest of the production line.

The interfaces are used to integrating the Corona-Plus system into the complete process control. Making it easier for operators to control and understand the complete process line. On Coating, Laminating or Extruder lines all important parameters of the Corona Plus treatment and production data can be present at the operator's main panel in a graphical way.

Movement of all mechanical parts, such as electrodes or NIP rollers, can be controlled and monitored, Error messages and maintenance tips can be displayed in different languages. Data for different production-runs can also be stored and set-up can be controlled from the main control panel

The CP-PROFI, CP-CAN, CP-MOD, CP-IO and TCP/IP units are sold separately, and can subsequently be incorporated in existing Corona Plus equipment.

#### CP-PROFI :

European standard EN50170.  
Specifications according to DIN19245.

Possibility for external 24Vdc supply.  
Supports data exchange up to 12 Mbaud.

#### CP-CAN :

Specifications according to ISO/DIS 11898.  
Equipped with a CIA standard DS102-1 9 pin connector.  
Possibility for external 24Vdc supply.  
Works with the industrial Open Can protocol.

#### CP-MOD :

Specifications according to EIA/TIA-485 standard  
DCE device following EIA/TIA-232 standard  
Possibility for external 24Vdc supply

#### CP-IO :

Digital error signals via optocoupler  
Signals in: Corona on/off, electrode close/open  
Signals out: Corona working, Corona alarm

#### TCP/IP :

SMS-system for integration and TCP/IP web interface



Fabriksvej 11, 6000 Kolding, Denmark  
Tel +45 76300333 - Fax +45 76300334  
www.vetaphone.com - sales@vetaphone.com